

FC-P



Rodete de álabes curvados hacia adelante
Forward curved impeller

Ventilador centrífugo de acoplamiento directo y simple aspiración. Fabricados en chapa de acero protegida contra la corrosión mediante tratamiento por cataforesis + pintura poliuretana. Temperaturas del aire a transportar -20°C/+100°C en continuo.

Motores

De 2 polos, de alta eficiencia IE 3*, tensión de alimentación trifásica 230/400V 50Hz hasta tamaño motor 112, y 400/690V 50Hz para motores de mayor dimensión. Protección IP55, Clase F.

* A partir de 0,75 kW el motor puede ser de eficiencia IE 2 controlado por convertidor de frecuencia.

Bajo pedido

- Fabricación en diferentes materiales constructivos.
- Motores de 2 velocidades.
- Versiones de 60 Hz.
- Pintura en diferentes RAL.
- Versión sin pie soporte (Motor-Brida, Sistema 5), hasta tamaño de motor 160.
- Versión para alta temperatura: hasta 220°C (versiones B: con rodete de refrigeración).
- SISTEMA 8: acoplamiento mediante junta elástica.

Direct drive, single inlet centrifugal fan. Manufactured from steel sheet protected with cataforesis primer + polyurethane paint finish. Designed to continuously circulate air from -20°C up to 100°C.

Motors

2, 4 or 6 pole, IE 3* high efficiency, three-phase 230/400V 50Hz up to motor size 112 and 400/690V 50Hz for higher motors. IP55, Class F protection.

* From 0,75kW, motor can be IE 2 and controlled by VSD.

On request

- Manufactured from different materials.
- 2-speed motors.
- 60 Hz versions.
- Painted in different RAL colour.
- Fan with no supporting stand (Motor-Flange, Arrangement 5), up to motor size 160.
- High-temperature versions (up to 220°C) (B versions: with cooling impeller).
- ARRANGEMENT 8: with joint flexible coupling.

- Trampilla de inspección, purga de drenaje, distintos tipos de estanqueidad a nivel de voluta y de paso de eje.
- Ventiladores estancos.
- Calorifugado.

Versiones ATEX

Bajo pedido, versiones antiexplosivas según la Directiva ATEX para modelos trifásicos:

Para trabajar a temperaturas de -20°C a +60°C, presión ambiente (absoluta) de 0,8 bar hasta 1,1 bar, según EN 14986.

• Gas:

- ⊗ 2G IIB T2-T3-T4*
- ⊗ 2G IIB+H2 T2-T3-T4*
- ⊗ 3G IIB T2-T3-T4*
- ⊗ 3G IIB+H2 T2-T3-T4*

• Polvo no conductivo:

- ⊗ 2D IIIB T125°C*-T135°C*-T195°C-T295°C
- ⊗ 3D IIIB T125°C*-T135°C*-T195°C-T295°C

• Polvo conductivo (con motor IP65 IIIC):

- ⊗ 2D IIIC T125°C*-T135°C*-T195°C-T295°C
- ⊗ 3D IIIC T125°C*-T135°C*-T195°C-T295°C

* Viabilidad técnica solicitada.

- Inspection door, draining, different seals on scroll and shaft access.
- Welded casing.
- Thermal insulation lagging.

ATEX versions

On request, explosion proof versions in accordance with ATEX directive for three phase models:

Ambient temperature -20°C to +60°C, ambient pressure (abs.) 0,8 bar to 1,1 bar according to EN 14986.

• Gas:

- ⊗ 2G IIB T2-T3-T4*
- ⊗ 2G IIB+H2 T2-T3-T4*
- ⊗ 3G IIB T2-T3-T4*
- ⊗ 3G IIB+H2 T2-T3-T4*

• Non-conductive dust:

- ⊗ 2D IIIB T125°C*T135°C*-T195°C-T295°C
- ⊗ 3D IIIB T125°C*-T135°C*-T195°C-T295°C

• Conductive dust (compulsory IP65 IIIC motor):

- ⊗ 2D IIIC T125°C*-T135°C*-T195°C-T295°C
- ⊗ 3D IIIC T125°C*-T135°C*-T195°C-T295°C

* Requested technical feasibility

CUADRO DE APLICACIONES
TABLE OF APPLICATIONS

| Aire a transportar Air Type | Cantidad de polvo Dust quantity (mg/m ³) |
|--------------------------------|--|
| Aire polvoriento Dusty air | <5000 |

RODETE ÁLABES CURVADOS HACIA ADELANTE - ACOPLAMIENTO DIRECTO FORWARD CURVED IMPELLER - DIRECT DRIVE



CARACTERÍSTICAS TÉCNICAS / TECHNICAL FEATURES

Es imprescindible comprobar que las características eléctricas (voltaje, intensidad, frecuencia, etc.) del motor que aparecen en la placa del mismo son compatibles con las de la instalación.

Please, check that electrical features (voltage, current, frequency, etc.) are suitable with your installation.

| Modelo Model | Tamaño motor Motor size | Velocidad Speed (r.p.m.) | Potencia motor Motor power (kW) | Intensidad motor 400V Maximum absorbed current 400V (A) | Caudal máximo Maximum airflow (m ³ /h) | Nivel presión sonora a 1 m Sound pressure level at 1 m (dB(A)) ⁽¹⁾ | Peso Weight (kg) ⁽²⁾ | Momento de inercia Moment of inertia (kg·m ²) ⁽³⁾ |
|------------------|----------------------------|--------------------------------|---------------------------------------|--|---|---|---------------------------------------|--|
| 2 POLOS / 2 POLE | | | | | | | | |
| FC 501/2 P4A | 90S2 | 2840 | 1,5 | 3,07 | 960 | 76 | 67 | 0,30 |
| FC 561/2 P4A | 90L2 | 2850 | 2,2 | 4,43 | 820 | 76 | 101 | 0,45 |
| FC 561/2 P4A | 100LA2 | 2900 | 3,0 | 5,77 | 1.360 | 78 | 110 | 0,45 |
| FC 632/2 P4A | 100LA2 | 2900 | 3,0 | 5,77 | 900 | 79 | 129 | 0,63 |
| FC 632/2 P4A | 112M2 | 2910 | 4,0 | 7,50 | 1.200 | 79 | 134 | 0,63 |
| FC 631/2 P4A | 100LA2 | 2900 | 3,0 | 5,77 | 810 | 80 | 132 | 0,78 |
| FC 631/2 P4A | 112M2 | 2910 | 4,0 | 7,50 | 1.150 | 80 | 137 | 0,78 |
| FC 631/2 P4A | 132SA2 | 2890 | 5,5 | 10,10 | 1.900 | 84 | 151 | 0,78 |
| FC 712/2 P4A | 112M2 | 2910 | 4,0 | 7,50 | 790 | 81 | 164 | 1,23 |
| FC 712/2 P4A | 132SA2 | 2890 | 5,5 | 10,10 | 1.430 | 85 | 177 | 1,23 |
| FC 712/2 P4A | 132SB2 | 2890 | 7,5 | 13,90 | 1.690 | 85 | 183 | 1,23 |
| FC 711/2 P4A | 132SA2 | 2890 | 5,5 | 10,10 | 1.150 | 85 | 181 | 1,48 |
| FC 711/2 P4A | 132SB2 | 2890 | 7,5 | 13,90 | 1.750 | 85 | 187 | 1,48 |
| FC 711/2 P4A | 132MB2 | 2900 | 9,2 | 16,60 | 2.710 | 85 | 196 | 1,48 |
| FC 802/2 P4A | 132SB2 | 2890 | 7,5 | 13,90 | 1.040 | 86 | 221 | 1,85 |
| FC 802/2 P4A | 132MB2 | 2900 | 9,2 | 16,60 | 1.620 | 86 | 229 | 1,85 |
| FC 802/2 P4A | 160MR2 | 2930 | 11,0 | 18,70 | 1.910 | 87 | 253 | 1,85 |
| FC 801/2 P4A | 132MB2 | 2900 | 9,2 | 16,60 | 1.330 | 87 | 234 | 2,58 |
| FC 801/2 P4A | 160M2 | 2935 | 15,0 | 25,40 | 3.960 | 87 | 258 | 2,58 |
| FC 902/2 P4A | 160M2 | 2935 | 15,0 | 25,40 | 2.700 | 88 | 366 | 3,20 |
| FC 902/2 P4A | 160L2 | 2935 | 18,5 | 33,30 | 1.600 | 88 | 377 | 3,20 |
| FC 901/2 P4A | 160M2 | 2935 | 15,0 | 25,40 | 1.900 | 89 | 372 | 3,80 |
| FC 901/2 P4A | 160L2 | 2935 | 18,5 | 33,30 | 2.660 | 89 | 383 | 3,80 |
| FC 901/2 P4A | 180M2 | 2940 | 22,0 | 39,00 | 5.670 | 89 | 405 | 3,80 |
| FC 1002/2 P4A | 180M2 | 2940 | 22,0 | 39,00 | 1.560 | 90 | 450 | 4,80 |
| FC 1002/2 P4A | 200L2 | 2960 | 30,0 | 53,50 | 3.060 | 90 | 555 | 4,80 |
| FC 1001/2 P4A | 200L2 | 2960 | 30,0 | 53,50 | 2.980 | 91 | 575 | 5,80 |
| FC 1001/2 P4A | 200L2 | 2960 | 37,0 | 65,60 | 7.830 | 91 | 585 | 5,80 |

¹ Entubado en la descarga / Piping only on outlet side

Tolerancia del nivel de ruido de +3dB/A, medido en el punto de máxima eficiencia / Noise level tolerance +3 dB/A, measured in the maximum efficiency point

² Con motor incluido y para orientación LG270 o RD270 / With motor included and for LG270 or RD270 position

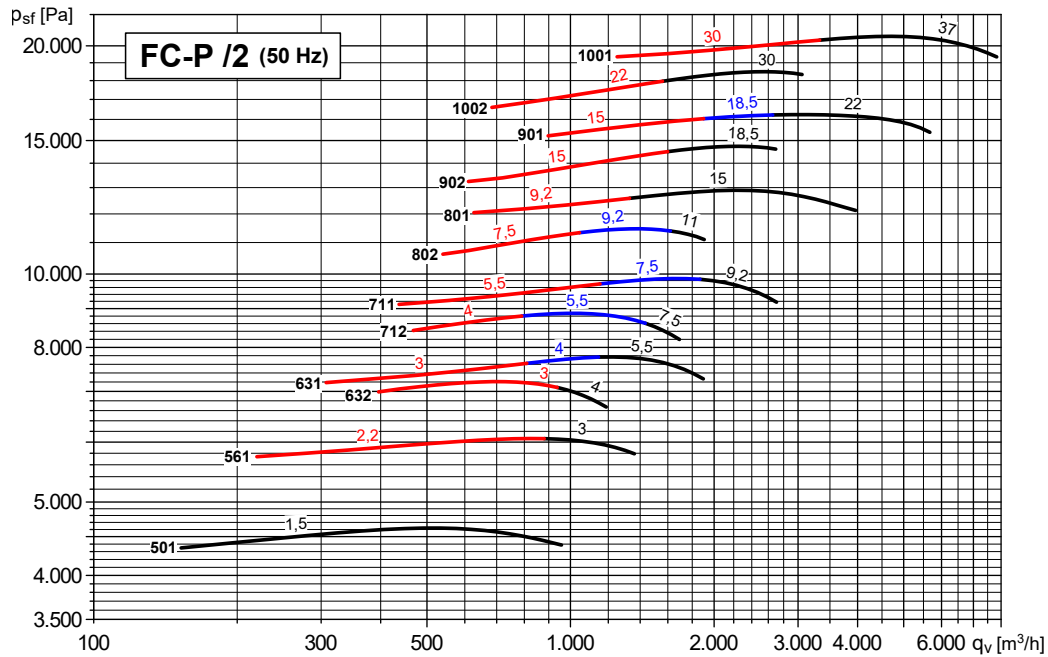
³ Momento de inercia del rodetes / Impeller's moment of inertia

CURVAS CARACTERÍSTICAS (a la descarga/a la aspiración) / PERFORMANCE CURVES (at outlet/inlet)

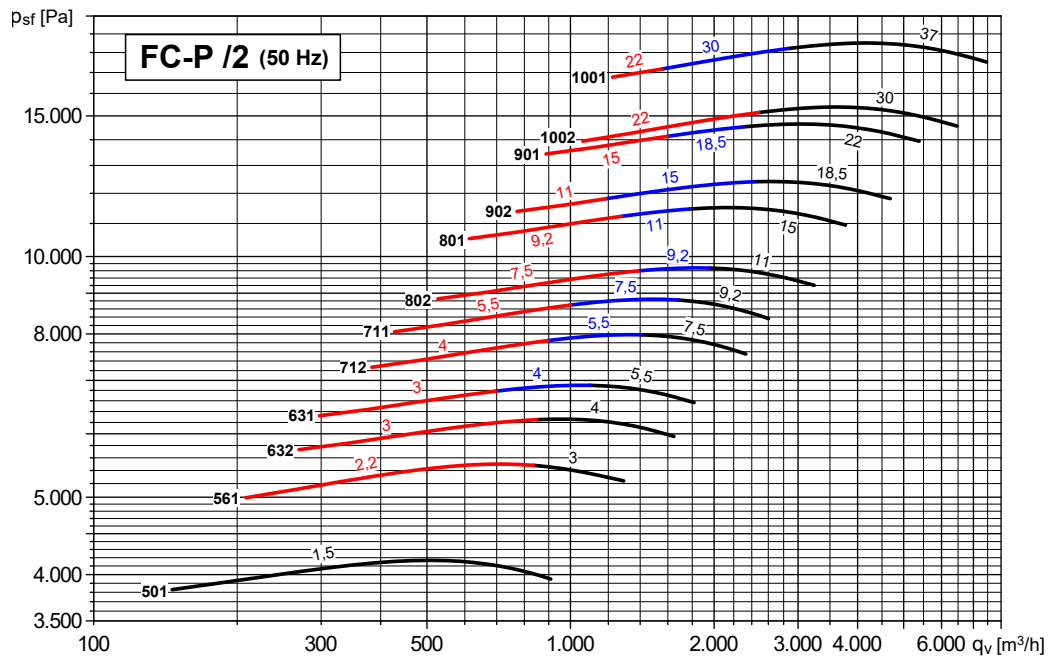
- Caudal en m³/h.
- **Psf: Presión estática en Pa.**
- Modelo - Potencia motor en kW.
- Ejemplo: 901 - 15, 18,5 o 22
 Modelo - kW

- Air volume in m³/h.
- **Psf: Static pressure in Pa.**
- Model - Motor power in kW.
- Example: 901 - 15, 18,5 or 22
 Model - kW

2 polos - Descarga - Modelos desde 501 hasta 1001
 2 pole - Outlet - Models from 501 to 1001



2 polos - Aspiración - Modelos desde 501 hasta 1001
 2 pole - Inlet - Models from 501 to 1001



RODETE ÁLABES CURVADOS HACIA ADELANTE - ACOPLAMIENTO DIRECTO FORWARD CURVED IMPELLER - DIRECT DRIVE



DIMENSIONES (mm) / DIMENSIONS (mm)

DESCARGA ORIENTABLE
DISCHARGE ADJUSTABLE

EJECUCIÓN B
Con rodete de refrigeración,
contactar con oficina técnica.

CONFIGURATION B
With cooling impeller, please
contact our technical office.

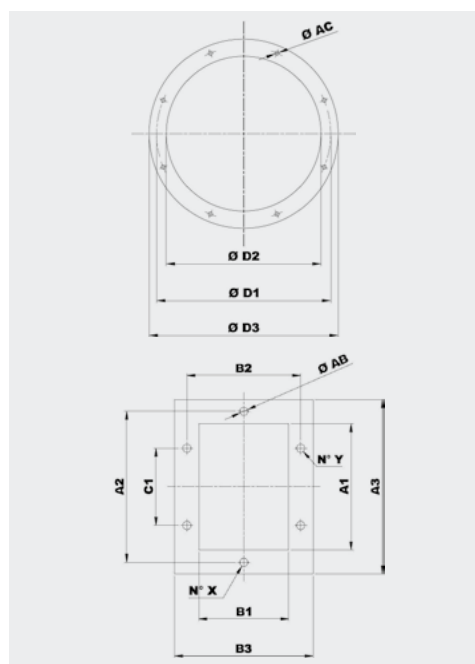
ORIENTACIONES / POSITIONS

| | | | | | | | | |
|----|----|-----|-----|------|------|------|------|------|
| LG | 0° | 45° | 90° | 135° | 180° | 225° | 270° | 315° |
| RD | 0° | 45° | 90° | 135° | 180° | 225° | 270° | 315° |

Para los ventiladores con orientaciones 180° y 225°, contactar con oficina técnica
For fans with 180° and 225° positions, please contact our technical office

| Tipo Type | | Ventilador Fan | | | | | | | | | | | Base Base | | | | | | | |
|-------------------|----------------------|-------------------|-----|-----|------|-----|-----|----|-----|------|-------|-----|--------------|-----|-----|-----|----|-----|----|------|
| Ventilador Fan | Motor GR Motor GR | A* | B | C | Ø D1 | E | F | G | H | HT | mxl | Y | LT | L | P | M | Q | R | S | Ø AA |
| FC 501/2 P4A | 90S2 | 395 | 380 | 350 | 182 | 347 | 335 | 46 | 450 | 800 | M6X20 | 102 | 715 | 260 | 234 | 260 | 60 | 183 | 17 | 10 |
| FC 561/2 P4A | 90L2 | 420 | 430 | 390 | 200 | 393 | 375 | 50 | 500 | 890 | M6X20 | 107 | 805 | 260 | 234 | 260 | 60 | 183 | 17 | 10 |
| FC 561/2 P4A | 100LA2 | 460 | 430 | 390 | 200 | 393 | 375 | 50 | 500 | 890 | M6X20 | 70 | 805 | 324 | 289 | 295 | 23 | 249 | 23 | 12 |
| FC 631/2 P4A | 132SA2 | 550 | 485 | 440 | 219 | 443 | 425 | 56 | 560 | 1000 | M6X20 | 76 | 910 | 372 | 337 | 360 | 23 | 314 | 23 | 12 |
| FC 631/2 P4A | 100LA2 | 490 | 485 | 440 | 219 | 443 | 425 | 56 | 560 | 1000 | M6X20 | 76 | 910 | 324 | 289 | 295 | 23 | 249 | 23 | 12 |
| FC 631/2 P4A | 112M2 | 530 | 485 | 440 | 219 | 443 | 425 | 56 | 560 | 1000 | M6X20 | 76 | 910 | 324 | 289 | 310 | 23 | 264 | 23 | 12 |
| FC 632/2 P4A | 100LA2 | 490 | 485 | 440 | 219 | 443 | 425 | 56 | 560 | 1000 | M6X20 | 76 | 910 | 324 | 289 | 295 | 23 | 249 | 23 | 12 |
| FC 632/2 P4A | 112M2 | 530 | 485 | 440 | 219 | 443 | 425 | 56 | 560 | 1000 | M6X20 | 76 | 910 | 324 | 289 | 310 | 23 | 264 | 23 | 12 |
| FC 711/2 P4A | 132MB2 | 630 | 540 | 490 | 241 | 497 | 475 | 60 | 630 | 1120 | M6X20 | 81 | 1015 | 372 | 337 | 360 | 23 | 314 | 23 | 12 |
| FC 711/2 P4A | 132SA2 | 630 | 540 | 490 | 241 | 497 | 475 | 60 | 630 | 1120 | M6X20 | 81 | 1015 | 372 | 337 | 360 | 23 | 314 | 23 | 12 |
| FC 711/2 P4A | 132SB2 | 630 | 540 | 490 | 241 | 497 | 475 | 60 | 630 | 1120 | M6X20 | 81 | 1015 | 372 | 337 | 360 | 23 | 314 | 23 | 12 |
| FC 712/2 P4A | 132SA2 | 630 | 540 | 490 | 241 | 497 | 475 | 60 | 630 | 1120 | M6X20 | 81 | 1015 | 372 | 337 | 360 | 23 | 314 | 23 | 12 |
| FC 712/2 P4A | 132SB2 | 630 | 540 | 490 | 241 | 497 | 475 | 60 | 630 | 1120 | M6X20 | 81 | 1015 | 372 | 337 | 360 | 23 | 314 | 23 | 12 |
| FC 712/2 P4A | 112M2 | 570 | 540 | 490 | 241 | 497 | 475 | 60 | 630 | 1120 | M6X20 | 81 | 1015 | 324 | 289 | 310 | 23 | 264 | 23 | 12 |
| FC 801/2 P4A | 132MB2 | 640 | 610 | 550 | 265 | 560 | 530 | 68 | 710 | 1260 | M6X20 | 87 | 1140 | 372 | 337 | 360 | 23 | 314 | 23 | 12 |
| FC 801/2 P4A | 160M2 | 725 | 610 | 550 | 265 | 560 | 530 | 68 | 710 | 1260 | M6X20 | 92 | 1140 | 440 | 395 | 470 | 28 | 414 | 28 | 14 |
| FC 801/2 P4A | 160MR2 | 725 | 610 | 550 | 265 | 560 | 530 | 68 | 710 | 1260 | M6X20 | 92 | 1140 | 440 | 395 | 470 | 28 | 414 | 28 | 14 |
| FC 802/2 P4A | 132MB2 | 640 | 610 | 550 | 265 | 560 | 530 | 68 | 710 | 1260 | M6X20 | 87 | 1140 | 372 | 337 | 360 | 23 | 314 | 23 | 12 |
| FC 802/2 P4A | 160MR2 | 725 | 610 | 550 | 265 | 560 | 530 | 68 | 710 | 1260 | M6X20 | 92 | 1140 | 440 | 395 | 470 | 28 | 414 | 28 | 14 |
| FC 802/2 P4A | 132SB2 | 640 | 610 | 550 | 265 | 560 | 530 | 68 | 710 | 1260 | M6X20 | 87 | 1140 | 372 | 337 | 360 | 23 | 314 | 23 | 12 |
| FC 901/2 P4A | 160L2 | 735 | 685 | 620 | 292 | 631 | 600 | 74 | 800 | 1420 | M8X25 | 100 | 1285 | 440 | 395 | 470 | 28 | 414 | 28 | 14 |
| FC 901/2 P4A | 180M2 | 780 | 685 | 620 | 292 | 631 | 600 | 74 | 800 | 1420 | M8X25 | 105 | 1285 | 488 | 434 | 540 | 33 | 474 | 33 | 17 |
| FC 901/2 P4A | 200L2 | 848 | 685 | 620 | 292 | 631 | 600 | 74 | 800 | 1420 | M8X25 | 151 | 1285 | 568 | 506 | 552 | 80 | 433 | 39 | 19 |
| FC 901/2 P4A | 160M2 | 735 | 685 | 620 | 292 | 631 | 600 | 74 | 800 | 1420 | M8X25 | 100 | 1285 | 440 | 395 | 470 | 28 | 414 | 28 | 14 |
| FC 902/2 P4A | 160L2 | 735 | 685 | 620 | 292 | 631 | 600 | 74 | 800 | 1420 | M8X25 | 100 | 1285 | 440 | 395 | 470 | 28 | 414 | 28 | 14 |
| FC 902/2 P4A | 160M2 | 735 | 685 | 620 | 292 | 631 | 600 | 74 | 800 | 1420 | M8X25 | 100 | 1285 | 440 | 395 | 470 | 28 | 414 | 28 | 14 |
| FC 902/2 P4A | 160MR2 | 735 | 685 | 620 | 292 | 631 | 600 | 74 | 800 | 1420 | M8X25 | 100 | 1285 | 440 | 395 | 470 | 28 | 414 | 28 | 14 |
| FC 1001/2 P4A | 180M2 | 800 | 760 | 690 | 332 | 707 | 670 | 85 | 900 | 1590 | M8X25 | 116 | 1430 | 488 | 434 | 540 | 33 | 474 | 33 | 17 |
| FC 1001/2 P4A | 200L2 | 925 | 760 | 690 | 332 | 707 | 670 | 85 | 900 | 1590 | M8X25 | 163 | 1430 | 568 | 506 | 552 | 80 | 433 | 39 | 19 |
| FC 1001/2 P4A | 225M2 | 925 | 760 | 690 | 332 | 707 | 670 | 85 | 900 | 1590 | M8X25 | 163 | 1430 | 616 | 556 | 592 | 80 | 473 | 39 | 19 |
| FC 1002/2 P4A | 180M2 | 800 | 760 | 690 | 332 | 707 | 670 | 85 | 900 | 1590 | M8X25 | 116 | 1430 | 488 | 434 | 540 | 33 | 474 | 33 | 17 |
| FC 1002/2 P4A | 200L2 | 925 | 760 | 690 | 332 | 707 | 670 | 85 | 900 | 1590 | M8X25 | 163 | 1430 | 568 | 506 | 552 | 80 | 433 | 39 | 19 |

* Según tamaño motor / Depending on motor size

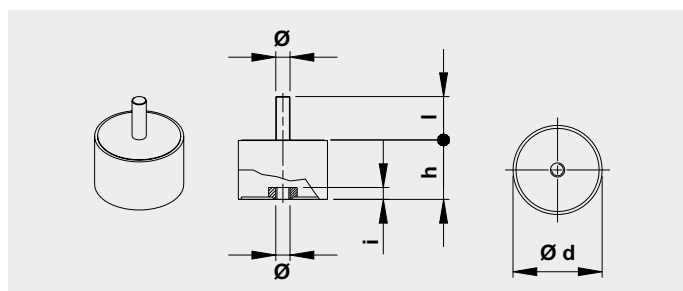


| Modelo Model | Brida aspiración Inlet flange | | | | | |
|-----------------|----------------------------------|------|------|------|------|-------------------|
| | Tipo brida Bride type | Ø D1 | Ø D2 | Ø D3 | Ø AC | Agujeros Holes |
| 501 | 140 | 182 | 144 | 214 | 8 | 8 |
| 561 | 160 | 200 | 164 | 234 | 8 | 8 |
| 631 | 180 | 219 | 184 | 254 | 8 | 8 |
| 711 | 200 | 241 | 204 | 274 | 8 | 8 |
| 801 | 224 | 265 | 228 | 298 | 8 | 8 |
| 901 | 250 | 292 | 254 | 324 | 10 | 8 |
| 1001 | 280 | 332 | 285 | 365 | 10 | 8 |

| Modelo Model | Brida descarga Discharge flange | | | | | | | | | | |
|-----------------|------------------------------------|-----|-----|-----|-----|-----|-----|-----|------|-----|-----|
| | Tipo brida Bride type | A1 | B1 | A2 | B2 | A3 | B3 | C1 | Ø AB | N°X | N°Y |
| 501 | 100x71 | 105 | 76 | 139 | 110 | 165 | 136 | - | 10 | 1+1 | 1+1 |
| 561 | 112x80 | 117 | 85 | 151 | 119 | 177 | 145 | - | 10 | 1+1 | 1+1 |
| 631 | 125x90 | 131 | 95 | 165 | 129 | 191 | 155 | 100 | 10 | 1+1 | 2+2 |
| 711 | 140x100 | 146 | 105 | 182 | 139 | 216 | 175 | 112 | 12 | 1+1 | 2+2 |
| 801 | 160x112 | 164 | 117 | 200 | 151 | 234 | 187 | 112 | 12 | 1+1 | 2+2 |
| 901 | 180x125 | 183 | 131 | 219 | 165 | 253 | 201 | 112 | 12 | 1+1 | 2+2 |
| 1001 | 200x140 | 205 | 146 | 241 | 182 | 275 | 216 | 112 | 12 | 2+2 | 2+2 |

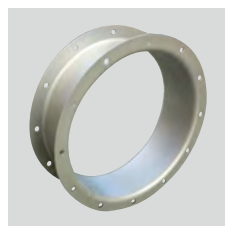
AMORTIGUADORES / SILENT BLOCKS

| Amortiguadores recomendados / Suggested silent blocks | |
|---|-----------------------------|
| Ventilador / Fan | Ejecución 4 / Arrangement 4 |
| 501 | 4 x AM 25 - 25x20 |
| 561 | 4 x AM 30 - 30x30 |
| 631/2 | 4 x AM 30 - 30x30 |
| 711/2 | 4 x AM 40 - 40x30 |
| 801/2 | 4 x AM 50 - 50x40 |
| 901/2 | 4 x AM 75 - 75x50 |
| 1001/2 | 4 x AM 75 - 75x50 |

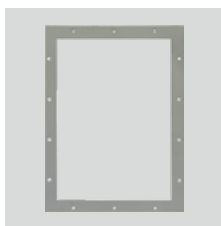


| Tipo Type | Carga para 4 soportes Load for 4 supports (kg) | d | h | Ø | l | Peso Weight (kg) |
|--------------|--|----|----|-----|----|------------------------|
| AM25 | 41÷80 | 25 | 20 | M6 | 18 | 0,03 |
| AM30 | 81÷140 | 30 | 30 | M8 | 20 | 0,05 |
| AM40 | 141÷224 | 40 | 30 | M8 | 23 | 0,10 |
| AM50 | 225÷315 | 50 | 40 | M10 | 28 | 0,20 |
| AM75 | 316÷630 | 75 | 50 | M12 | 37 | 0,50 |

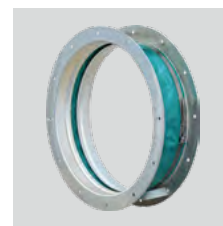
ACCESORIOS / ACCESSORIES



CA (CFH1) - CFH2 - CFH3
 Contrabrida -
 Brida plana circular.
*Counter-flange -
 Circular flange.*



CP
 Brida plana
 rectangular.
Rectangular Flange.



GA
 Junta flexible
 aspiración.
*Inlet flexible
 connector.*



GP
 Junta flexible
 descarga.
*Outlet flexible
 connector.*



DP
 Regulador de caudal
 de aspiración.
*Inlet damper
 governor.*



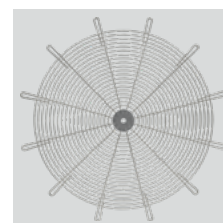
SAD
 Compuerta de
 regulación de caudal
 de descarga.
*Air reducing damper
 at outlet.*



SF
 Válvula mariposa.
Throttle valve.



DF
 Filtro en la
 aspiración.
Air filter at inlet.



RC
 Rejilla de protección
 para la aspiración.
Protection net.



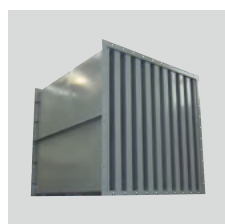
AM/AZ
 Soportes
 antivibratorios.
Silent blocks.



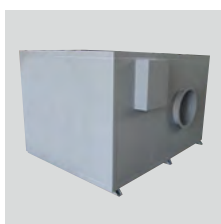
SCSO
 Silenciador
 cilíndrico.
*Cylindrical sound
 attenuator.*



SCCO
 Silenciador cilíndrico
 con bulbo.
*Cylindrical sound
 attenuator with
 internal pot.*



SASS
 Silenciador
 rectangular.
*Baffle type sound
 attenuator.*



CI
 Cabina de
 insonorización.
Noise enclosure.

Ver información completa en "Accesorios de montaje".
 For more information see "Mounting accessories".

FC-P



Rodete de álabes curvados hacia adelante
 Forward curved impeller

Ventilador centrífugo con accionamiento por poleas y correas y simple aspiración. Fabricados en chapa de acero protegida contra la corrosión mediante tratamiento por cataforesis + pintura poliuretana. Temperaturas del aire a transportar -20°C/+100°C en continuo.

Sistemas de montaje

- SISTEMA 1: eje libre, para acoplamiento mediante poleas y correas.
- SISTEMA 9: incluye motor, poleas, correas y protector de correas. Motor montado en el lateral del pie soporte rodamientos.
- SISTEMA 12: incluye motor, poleas, correas y protector de correas. Motor montado sobre la bancada general.

Motores

De 2, 4 o 6 polos, de alta eficiencia IE 3* (las r.p.m. de cada motor se adaptarán al cálculo de cada transmisión), tensión de alimentación trifásica 230/400V 50Hz hasta tamaño motor 112 y 400/690V 50Hz para motores de mayor dimensión. Protección IP55, Clase F.

* A partir de 0,75 kW el motor puede ser de eficiencia IE 2 controlado por convertidor de frecuencia.

Bajo pedido

- Fabricación en diferentes materiales constructivos.
- Motores de 2 velocidades.
- Versiones de 60 Hz.
- Pintura en diferentes RAL.
- Versión para alta temperatura: hasta 300°C (versiones B: con rodete de refrigeración).
- Trampilla de inspección, purga de drenaje, distintos tipos de estanqueidad a nivel de voluta y de paso de eje.
- Ventiladores estancos.
- Calorifugado.

Versiones ATEX

Bajo pedido, versiones antiexplosivas según la Directiva ATEX para modelos trifásicos:

Para trabajar a temperaturas de -20°C a +60°C, presión ambiente (absoluta) de 0,8 bar hasta 1,1 bar, según EN 14986.

- Gas:
 - ⊗ 2G IIB T2-T3
 - ⊗ 2G IIB+H2 T2-T3
 - ⊗ 3G IIB T2-T3
 - ⊗ 3G IIB+H2 T2-T3
- Polvo no conductivo:
 - ⊗ 2D IIIB T195°C-T295°C
 - ⊗ 3D IIIB T195°C-T295°C
- Polvo conductivo (con motor IP65 IIIC):
 - ⊗ 2D IIIC T195°C-T295°C
 - ⊗ 3D IIIC T195°C-T295°C

| CUADRO DE APLICACIONES TABLE OF APPLICATIONS | |
|---|--|
| Aire a transportar Air Type | Cantidad de polvo Dust quantity [mg/m ³] |
| Aire polvoriento Dusty air | <5000 |

Single inlet centrifugal fans, for belt drive. Manufactured from steel sheet protected with cataforesis primer + polyurethane paint finish. Designed to continuously circulate air from -20°C up to 100°C.

Assembly systems

- ARRANGEMENT 1: Free shaft, for pulley or belt-drive.
- ARRANGEMENT 9: Includes motor, pulleys, belts and belt guard. Motor fitted on the side of the bearing mounting bracket.
- ARRANGEMENT 12: Includes motor, pulleys, belts and belt guard. Motor fitted on the base frame.

Motors

2, 4 or 6 pole, IE 3* high efficiency (the rpm of each motor will be adapted according to the calculation for each drive), three-phase 230/400V 50Hz up to motor size 112 and 400/690V 50Hz for higher motors. IP55, Class F protection.

* From 0,75kW, motor can be IE 2 and controlled by VSD.

On request

- Manufactured from different materials.
- 2-speed motors.
- 60 Hz versions.
- Painted in different RAL colour.
- High-temperature versions (up to 300°C) (B versions: with cooling impeller).
- Inspection door, draining, different seals on scroll and shaft access.
- Welded casing.
- Thermal insulation lagging.

ATEX versions

On request, explosion proof versions in accordance with ATEX directive for three phase models:

Ambient temperature -20°C to +60°C, ambient pressure (abs.) 0,8 bar to 1,1 bar according to EN 14986.

- Gas:
 - ⊗ 2G IIB T2-T3
 - ⊗ 2G IIB+H2 T2-T3,
 - ⊗ 3G IIB T2-T3
 - ⊗ 3G IIB+H2 T2-T3
- Non-conductive dust:
 - ⊗ 2D IIIB T195°C-T295°C
 - ⊗ 3D IIIB T195°C-T295°C
- Conductive dust (compulsory IP65 IIIC motor):
 - ⊗ 2D IIIC T195°C-T295°C
 - ⊗ 3D IIIC T195°C-T295°C

CARACTERÍSTICAS TÉCNICAS / TECHNICAL FEATURES

Es imprescindible comprobar que las características eléctricas (voltaje, intensidad, frecuencia, etc.) del motor que aparecen en la placa del mismo son compatibles con las de la instalación.

Please, check that electrical features (voltage, current, frequency, etc.) are suitable with your installation.

| Modelo Model | Caudal máximo Maximum airflow (m ³ /h) | Potencia motor máxima Maximum motor power (kW) | Peso Weight (kg) ⁽¹⁾ | Momento de inercia Moment of inertia (kg·m ²) ⁽²⁾ |
|-----------------|---|--|---------------------------------------|--|
| FC 501 P1A | 1.350 | 5,5 | 65 | 0,30 |
| FC 561 P1A | 1.880 | 9,2 | 81 | 0,40 |
| FC 631 P1A | 2.330 | 11,0 | 114 | 0,70 |
| FC 711 P1A | 3.320 | 18,5 | 152 | 1,40 |
| FC 801 P1A | 4.250 | 22,0 | 189 | 2,60 |
| FC 901 P1A | 6.080 | 37,0 | 278 | 3,90 |
| FC 1001 P1A | 7.410 | 45,0 | 410 | 5,80 |

¹ Para ejecución 1 y orientación LG270 o RD270 / For arrangement 1 and LG270 or RD270 position

² Momento de inercia del rodete / Impeller's moment of inertia

SOPORTES SISTEMA 1 / SUPPORTS FOR ARRANGEMENT 1

| Modelo Model | 501-561 | 631 | 711-801 | 901 | 1001 |
|------------------------------|-----------|-----------|------------|------------|------------|
| Soporte tipo Support type | ST 80 A28 | ST 90 A38 | ST 100 A42 | ST 110 B48 | ST 120 B48 |

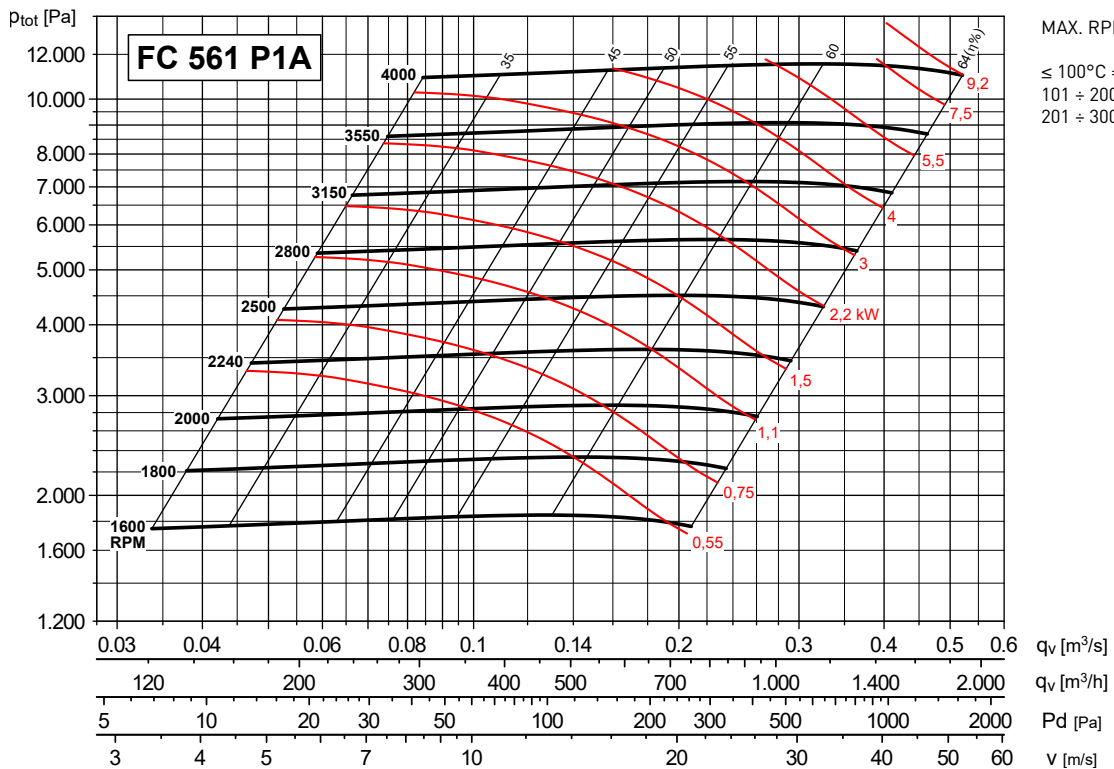
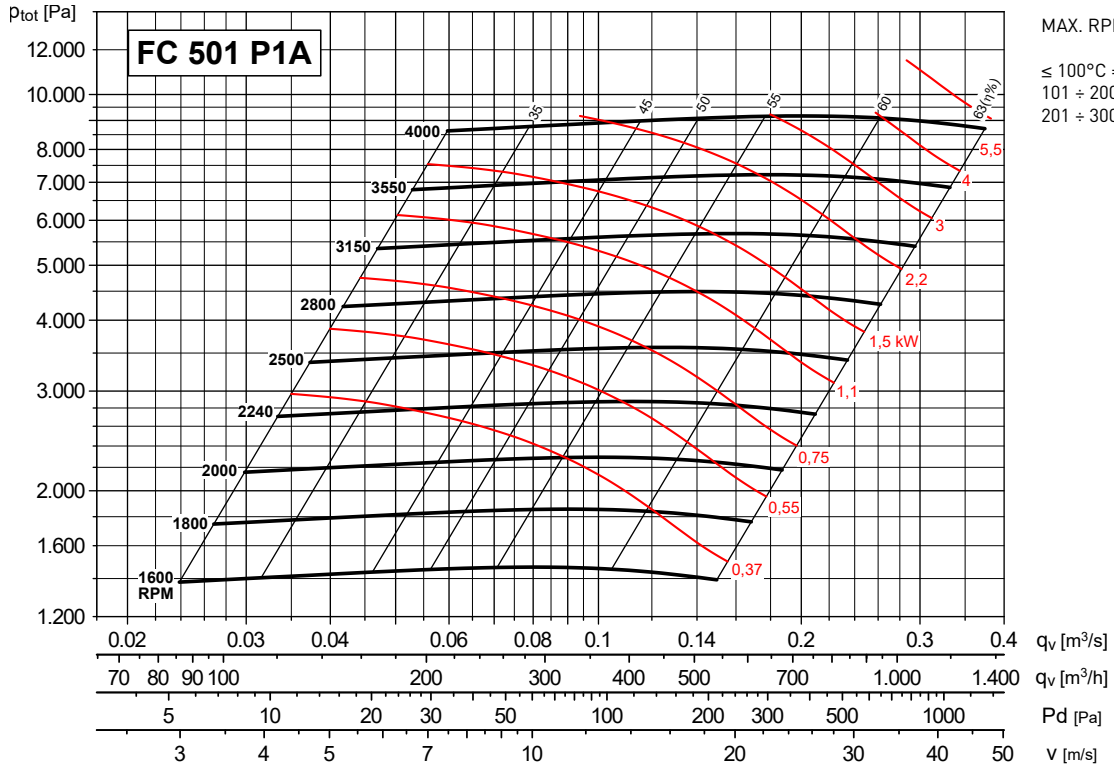
Ver información adicional / See additional information

MOTORES SISTEMA 9 / MOTOR SIZE FOR ARRANGEMENT 9

| Modelo Model | 501-631 | 711-901 | 1001 |
|----------------------------|----------|----------|------------|
| Tamaño motor Motor size | ≤ 132 M2 | ≤ 160 L2 | ≤ 180 L2-4 |

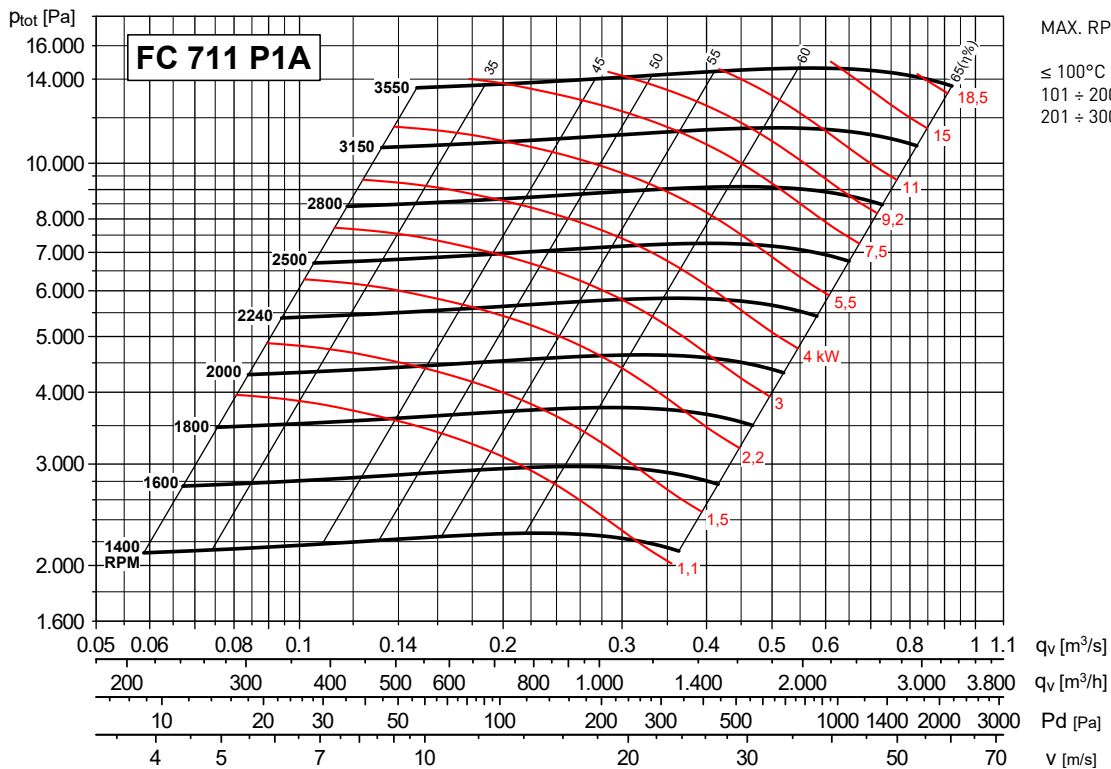
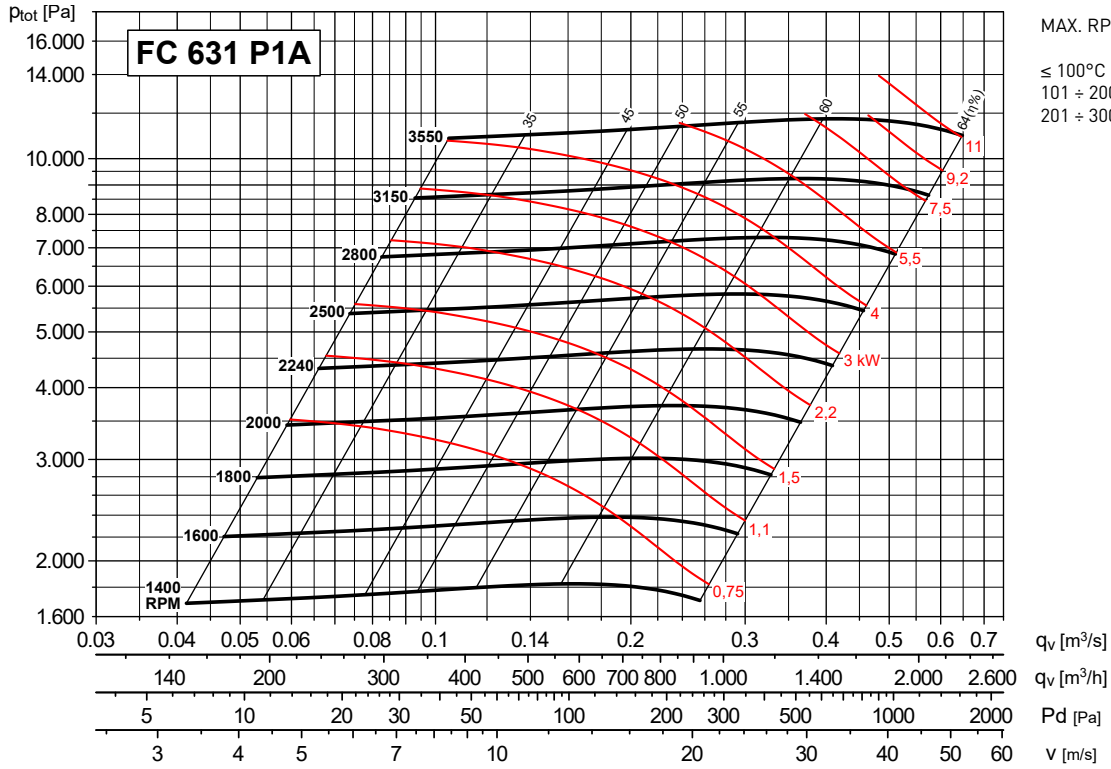
CURVAS CARACTERÍSTICAS (a la descarga) / PERFORMANCE CURVES (at outlet)

- P_{tot}: Presión total en Pa.
 - P_{tot}: Total pressure in Pa.



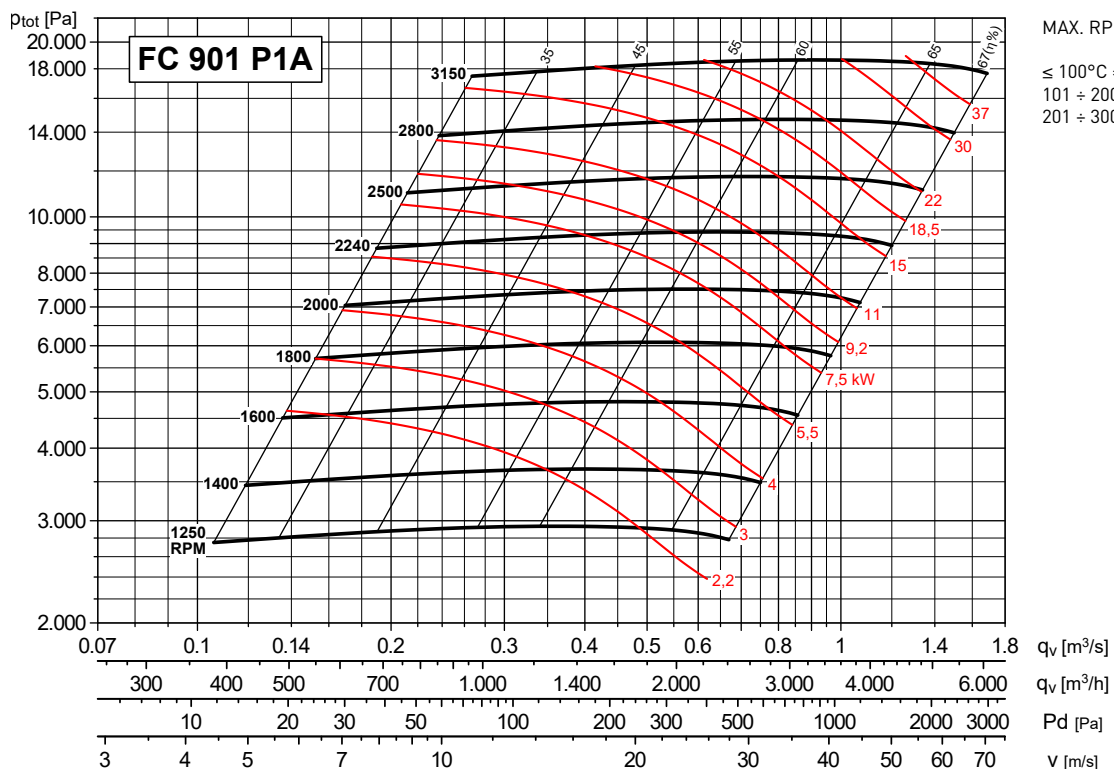
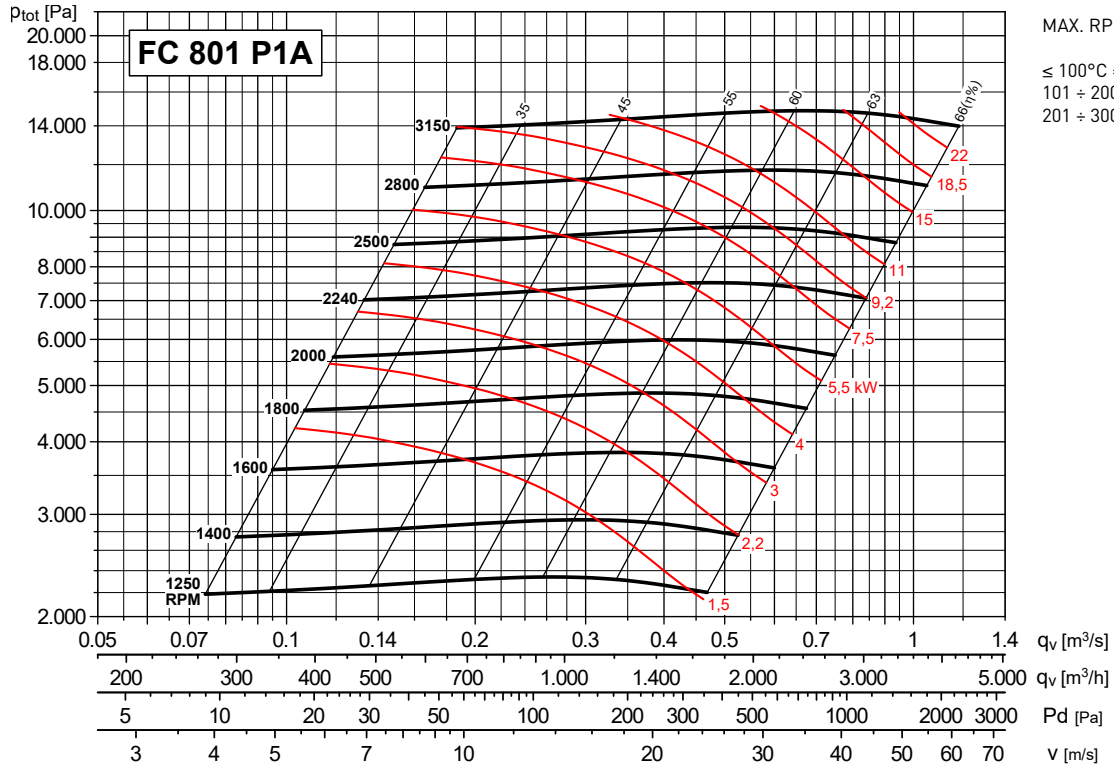
CURVAS CARACTERÍSTICAS (a la descarga) / PERFORMANCE CURVES (at outlet)

- Ptot: Presión total en Pa.
- Ptot: Total pressure in Pa.



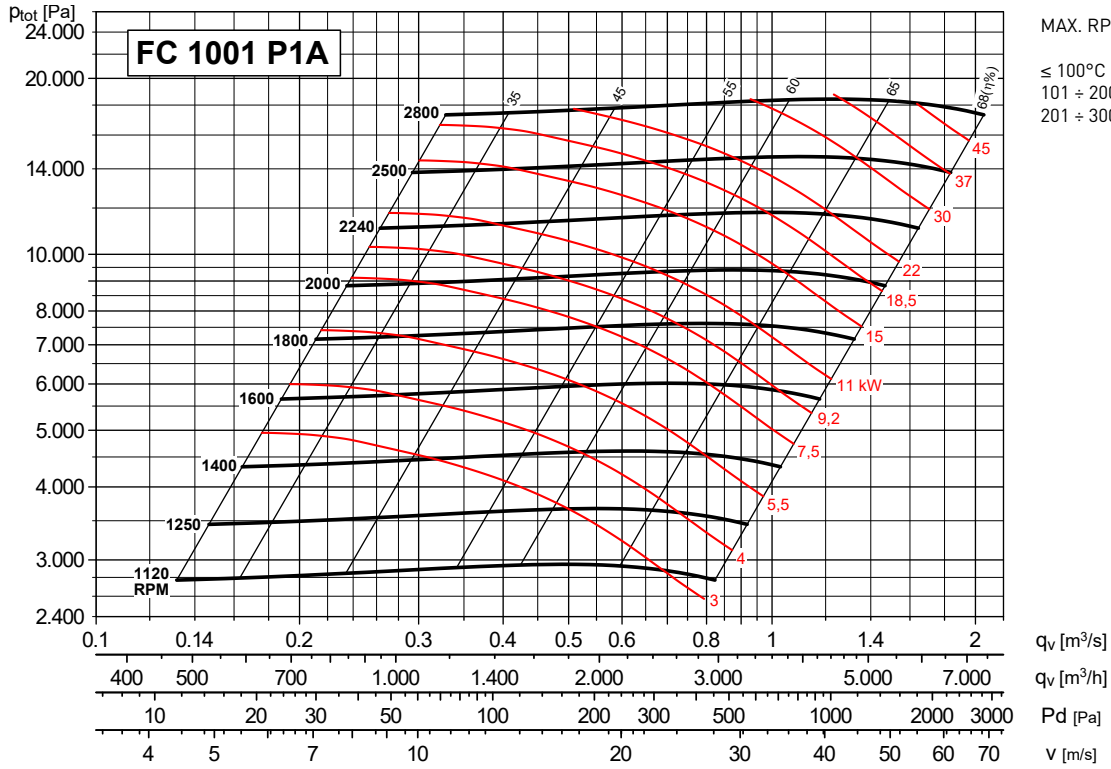
CURVAS CARACTERÍSTICAS (a la descarga) / PERFORMANCE CURVES (at outlet)

- Ptot: Presión total en Pa.
- Ptot: Total pressure in Pa.



CURVAS CARACTERÍSTICAS (a la descarga) / PERFORMANCE CURVES (at outlet)

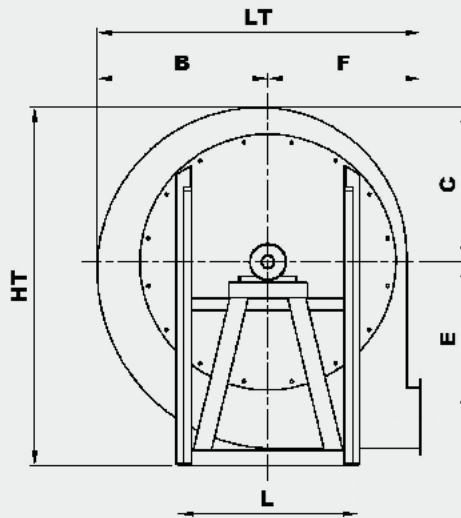
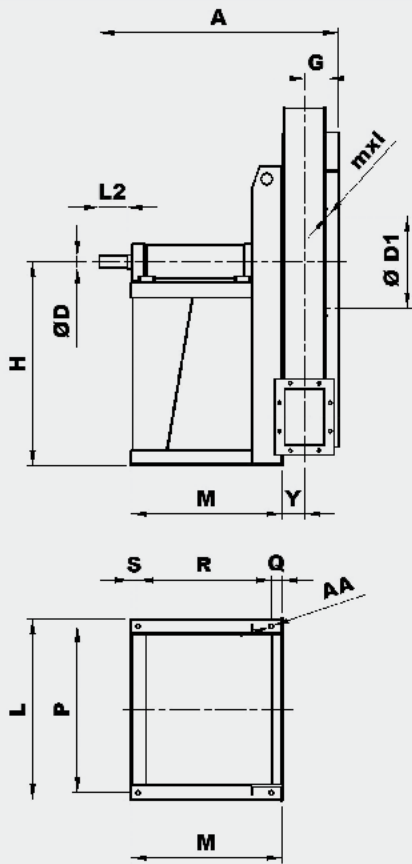
- Ptot: Presión total en Pa.
- Ptot: Total pressure in Pa.



RODETE ÁLABES CURVADOS HACIA ADELANTE - ACOPLAMIENTO A TRANSMISIÓN FORWARD CURVED IMPELLER - BELT DRIVE



DIMENSIONES (mm) / DIMENSIONS (mm)



DESCARGA ORIENTABLE
DISCHARGE ADJUSTABLE

EJECUCIÓN B
Con rodete de refrigeración,
contactar con oficina técnica.

CONFIGURATION B
With cooling impeller, please
contact our technical office.

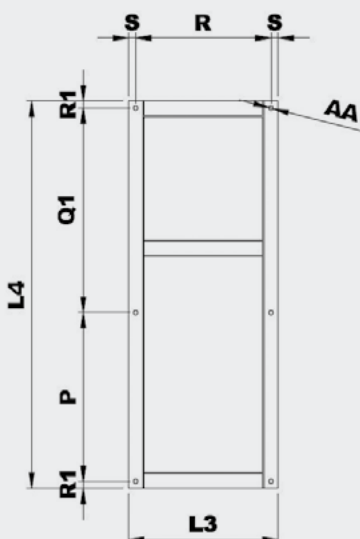
ORIENTACIONES / POSITIONS

| | | | | | | | | |
|----|----|-----|-----|------|------|------|------|------|
| LG | 0° | 45° | 90° | 135° | 180° | 225° | 270° | 315° |
| | 0° | 45° | 90° | 135° | 180° | 225° | 270° | 315° |
| RD | 0° | 45° | 90° | 135° | 180° | 225° | 270° | 315° |
| H | H1 | | | H2 | | | | |

Para estas orientaciones, contactar con oficina técnica
For these positions, please contact our technical office

| Tipo ventilador Fan type | Ventilador Fan | | | | | | | | | | | Eje Shaft | | Base Base | | | | | | | | |
|-----------------------------|-------------------|-----|-----|------|-----|-----|----|-----|-----|------|-------|--------------|------|--------------|-----|-----|-----|-----|----|-----|----|------|
| | A | B | C | Ø D1 | E | F | G | H | | HT | mxl | Y | LT | L2 | Ø D | L | P | M | Q | R | S | Ø AA |
| FC 501 P1A | 665 | 380 | 350 | 182 | 347 | 335 | 46 | 450 | 450 | 800 | M6X20 | 42 | 715 | 60 | 28 | 400 | 355 | 475 | 35 | 417 | 23 | 14 |
| FC 561 P1A | 665 | 430 | 390 | 200 | 393 | 375 | 50 | 500 | 500 | 890 | M6X20 | 47 | 805 | 60 | 28 | 400 | 355 | 457 | 23 | 411 | 23 | 14 |
| FC 631 P1A | 715 | 485 | 440 | 219 | 443 | 425 | 56 | 560 | 560 | 1000 | M6X20 | 53 | 910 | 80 | 38 | 400 | 355 | 475 | 23 | 429 | 23 | 14 |
| FC 711 P1A | 865 | 540 | 490 | 241 | 497 | 475 | 60 | 530 | 630 | 1120 | M6X20 | 58 | 1015 | 110 | 42 | 588 | 534 | 588 | 41 | 519 | 28 | 17 |
| FC 801 P1A | 875 | 610 | 550 | 265 | 560 | 530 | 68 | 600 | 710 | 1260 | M6X20 | 64 | 1140 | 110 | 42 | 628 | 574 | 583 | 36 | 519 | 28 | 17 |
| FC 901 P1A | 900 | 685 | 620 | 292 | 631 | 600 | 74 | 670 | 800 | 1420 | M8X25 | 72 | 1285 | 110 | 48 | 708 | 654 | 580 | 28 | 524 | 28 | 17 |
| FC 1001 P1A | 980 | 760 | 690 | 332 | 707 | 670 | 85 | 750 | 900 | 1590 | M8X25 | 83 | 1430 | 110 | 48 | 826 | 762 | 642 | 33 | 576 | 33 | 19 |

P12

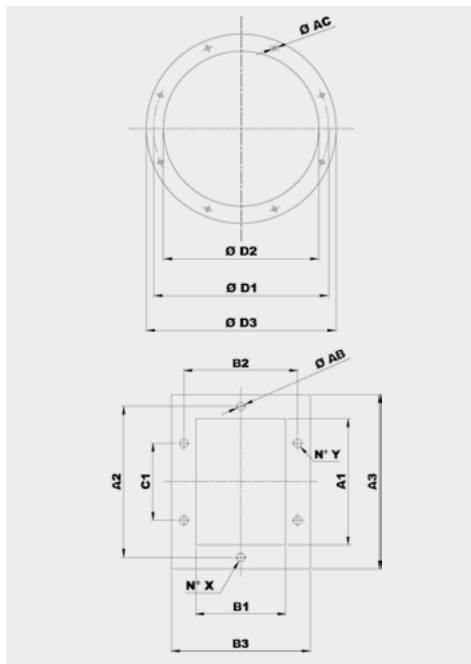


| Modelo Model | Bancada ejecución 12 Base frame arrangement 12 | | | | | | | | Peso Weight (kg) |
|-----------------|---|-----|--------|-------|-----|------|----|------|------------------------|
| | P | L3 | L4 | Q1 | R | R1 | S | Ø AA | |
| 501 P12A | 355 | 463 | 1060 | 660 | 417 | 22,5 | 23 | 14 | 21 |
| 561 P12A | 355 | 457 | 1120 | 720 | 411 | 22,5 | 23 | 14 | 21 |
| 631 P12A | 355 | 475 | 1180 | 780 | 429 | 22,5 | 23 | 14 | 23 |
| 711 P12A | 534 | 575 | 1250 | 662 | 519 | 27 | 28 | 17 | 32 |
| 801 P12A | 574 | 575 | 1400 | 772 | 519 | 27 | 28 | 17 | 35 |
| 901 P12A | 654 | 580 | 1500* | 792* | 524 | 27 | 28 | 17 | 45 |
| 1001 P12A | 762 | 642 | 1700** | 874** | 576 | 32 | 33 | 19 | 60 |

* Para motores de talla 250-280, esta cota aumenta en 150 mm
For motor size 250-280, increase this dimension 150 mm

** Para motores de talla 250-280, esta cota aumenta en 100 mm
For motor size 250-280, increase this dimension 100 mm

RODETE ÁLABES CURVADOS HACIA ADELANTE - ACOPLAMIENTO A TRANSMISIÓN FORWARD CURVED IMPELLER - BELT DRIVE



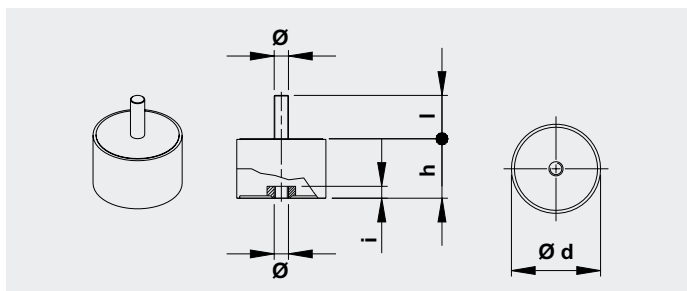
| Modelo Model | Brida aspiración Inlet flange | | | | | |
|-----------------|----------------------------------|------|------|------|------|-------------------|
| | Tipo brida Bride type | Ø D1 | Ø D2 | Ø D3 | Ø AC | Agujeros Holes |
| 501 | 140 | 182 | 144 | 214 | 8 | 8 |
| 561 | 160 | 200 | 164 | 234 | 8 | 8 |
| 631 | 180 | 219 | 184 | 254 | 8 | 8 |
| 711 | 200 | 241 | 204 | 274 | 8 | 8 |
| 801 | 224 | 265 | 228 | 298 | 8 | 8 |
| 901 | 250 | 292 | 254 | 324 | 10 | 8 |
| 1001 | 280 | 332 | 285 | 365 | 10 | 8 |

| Modelo Model | Brida descarga Discharge flange | | | | | | | | | | |
|-----------------|------------------------------------|-----|-----|-----|-----|-----|-----|-----|------|-----|-----|
| | Tipo brida Bride type | A1 | B1 | A2 | B2 | A3 | B3 | C1 | Ø AB | NºX | NºY |
| 501 | 100x71 | 105 | 76 | 139 | 110 | 165 | 136 | - | 10 | 1+1 | 1+1 |
| 561 | 112x80 | 117 | 85 | 151 | 119 | 177 | 145 | - | 10 | 1+1 | 1+1 |
| 631 | 125x90 | 131 | 95 | 165 | 129 | 191 | 155 | 100 | 10 | 1+1 | 2+2 |
| 711 | 140x100 | 146 | 105 | 182 | 139 | 216 | 175 | 112 | 12 | 1+1 | 2+2 |
| 801 | 160x112 | 164 | 117 | 200 | 151 | 234 | 187 | 112 | 12 | 1+1 | 2+2 |
| 901 | 180x125 | 183 | 131 | 219 | 165 | 253 | 201 | 112 | 12 | 1+1 | 2+2 |
| 1001 | 200x140 | 205 | 146 | 241 | 182 | 275 | 216 | 112 | 12 | 2+2 | 2+2 |

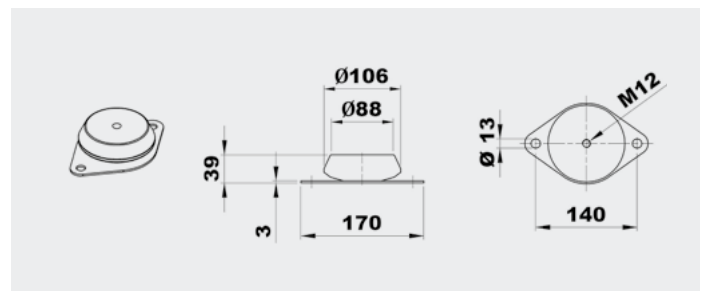
AMORTIGUADORES / SILENT BLOCKS

Amortiguadores recomendados / Suggested silent blocks

| Ventilador / Fan | Ejecución 9 / Arrangement 9 | Ejecución 12 / Arrangement 12 |
|------------------|-----------------------------|-------------------------------|
| 501 | 4 x AM 30 - 30x30 | 4 x AM 40 - 40x30 |
| 561 | 4 x AM 30 - 30x30 | 4 x AM 40 - 40x30 |
| 631/2 | 4 x AM 40 - 40x30 | 4 x AM 50 - 50x40 |
| 711/2 | 4 x AM 50 - 50x40 | 4 x AM 50 - 50x30 |
| 801/2 | 4 x AM 50 - 50x40 | 4 x AM 75 - 75x50 |
| 901/2 | 4 x AM 75 - 75x50 | 4 x AM 75 - 75x50 |
| 1001/2 | 4 x AM 75 - 75x50 | 4 x AZ 39 - 140x39 |

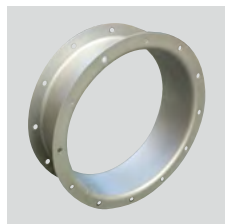


| Tipo Type | Carga para 4 soportes Load for 4 supports (kg) | d | h | Ø | l | Peso Weight (kg) |
|--------------|--|----|----|-----|----|------------------------|
| AM30 | 81÷140 | 30 | 30 | M8 | 20 | 0,05 |
| AM40 | 141÷224 | 40 | 30 | M8 | 23 | 0,10 |
| AM50 | 225÷315 | 50 | 40 | M10 | 28 | 0,20 |
| AM75 | 316÷630 | 75 | 50 | M12 | 37 | 0,50 |

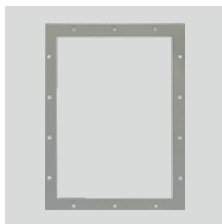


| Tipo Type | Carga para 4 soportes Load for 4 supports (kg) | Peso Weight (kg) |
|--------------|--|------------------------|
| AZ 39 | 631÷1250 | 0,7 |

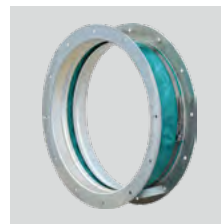
ACCESORIOS / ACCESSORIES



CA (CFH1) - CFH2 - CFH3
 Contrabrida -
 Brida plana circular.
*Counter-flange -
 Circular flange.*



CP
 Brida plana
 rectangular.
Rectangular Flange.



GA
 Junta flexible
 aspiración.
*Inlet flexible
 connector.*



GP
 Junta flexible
 descarga.
*Outlet flexible
 connector.*



DP
 Regulador de caudal
 de aspiración.
*Inlet damper
 governor.*



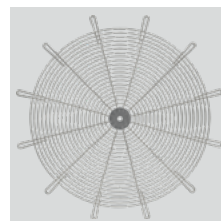
SAD
 Compuerta de
 regulación de caudal
 de descarga.
*Air reducing damper
 at outlet.*



SF
 Vávula mariposa.
Throttle valve.



DF
 Filtro en la
 aspiración.
Air filter at inlet.



RC
 Rejilla de protección
 para la aspiración.
Protection net.



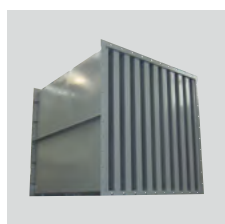
AM/AZ
 Soportes
 antivibratorios.
Silent blocks.



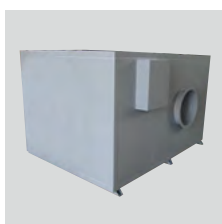
SCSO
 Silenciador
 cilíndrico.
*Cylindrical sound
 attenuator.*



SCCO
 Silenciador cilíndrico
 con bulbo.
*Cylindrical sound
 attenuator with
 internal pot.*



SASS
 Silenciador
 rectangular.
*Baffle type sound
 attenuator.*



CI
 Cabina de
 insonorización.
Noise enclosure.

Ver información completa en "Accesorios de montaje".
 For more information see "Mounting accessories".